

State of Wyoming Corner Record

(In compliance with the CORNER PERPETUATION AND FILING ACT, Wyoming Statutes, 1977, Section 36-11-101, et. seq., and the Rules and Regulations of the Board of Registration for Professional Engineers and Professional Land Surveyors)

Reverse side of this form may be used if more space is needed.

Record of original survey and citation of source of historical information (if corner is lost or obliterated). Description of corner monumentation evidence found and/or monument and accessories established to perpetuate the location of this corner. Sketch of relative location of monument, accessories, and reference points with course and distance to adjacent corner(s) (if determined in this survey). Method and rationale for reestablishment of lost or obliterated corner.

CC Sections 2 and 3, T.12N., R.63W., 6th P.M., Laramie County, Wyoming.

G.L.O. RECORD: 2" dia. X 36" long iron pipe with 2" brass cap; Edwin H. VanAntwerp, 1911.

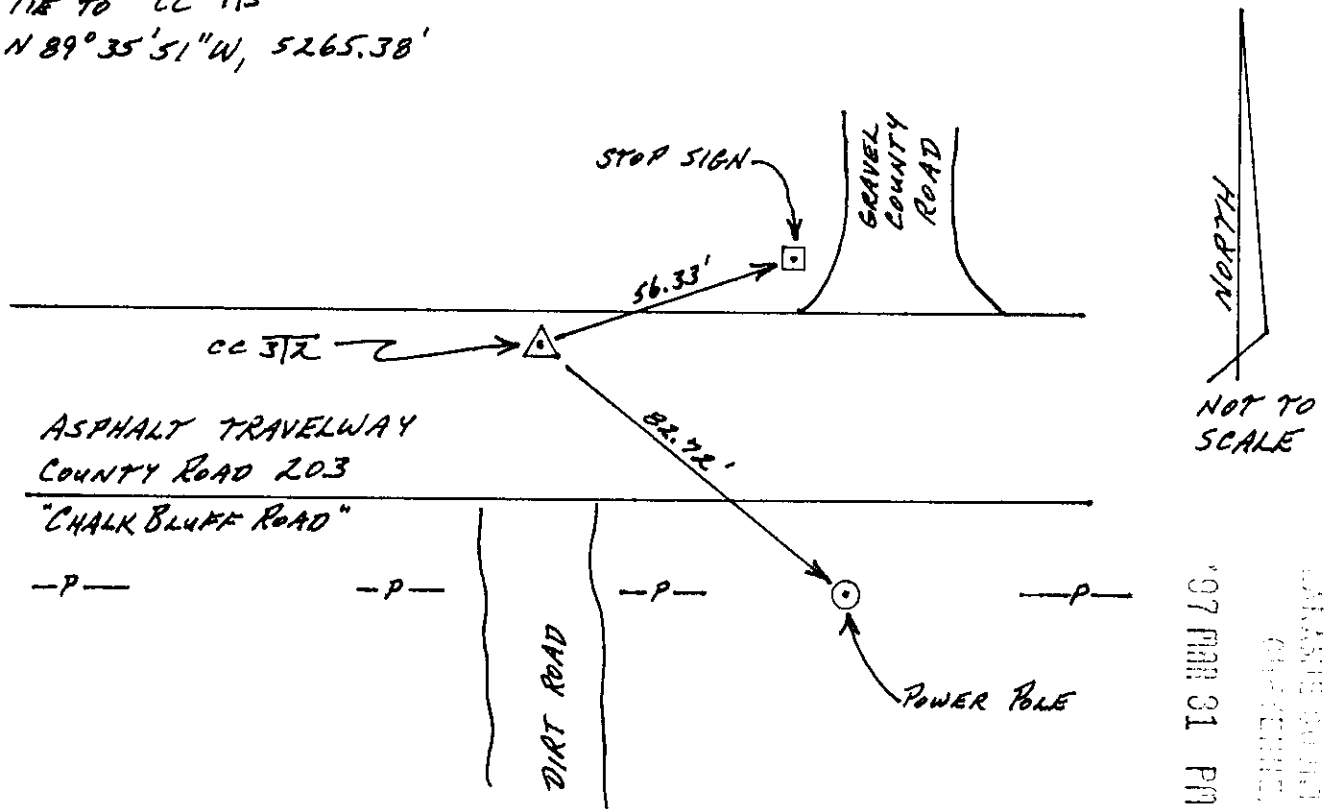
OTHER RECORDS: none.

FOUND: no evidence of the G.L.O. monument. Position falls in the asphalt paved portion of a county road with no supporting evidences of the original position of the corner in the immediate area.

SET: 30" long No.5 rebar with a 2 1/2" dia. aluminum survey cap stamped in accordance with B.L.M. Manual of Instructions and with "WYO. P.L.S. NO. 4828". This corner was reestablished by the single proportionate procedure along the Third Standard Parallel, using the SC 36, T13N, R63W, and 31, T13N, R62W, and the "Witness Corner" of record by "Certified Land Corner Recordation" for the CC 5 & 6, T12N, R63W by Ed Fry, Wyo. PE & LS No. 662.

Also set a 16d nail with a 1 1/2" dia. washer in a 4" square Stop Sign post situate northeasterly 56.33'; also set a 16d nail with a 1 1/2" dia. washer in a power pole situate southeasterly 82.72'.

TIE TO CC 413
N 89° 35' 51" W, 5265.38'



200171
 07 MAR 31 PM 1 10
 WYOMING BOARD OF PROFESSIONAL ENGINEERS AND SURVEYORS

CROSS INDEX DIAGRAM

	1	2	3	4	5	6	7	8	9	10	11	12	13	14	15	16	17	18	19	20	21	22	23	24	25
A																									
B																									
C	6																								
D		5																							
E																									
F																									
G	7																								
H		8																							
I																									
J																									
K																									
L	18																								
M		17																							
N																									
O																									
P	19																								
Q		20																							
R																									
S																									
T	20																								
U		29																							
V																									
W																									
X	21																								
Y		22																							
Z																									

Date of Field Work: March 1997

Office Reference: _____

Firm/Agency, Address _____

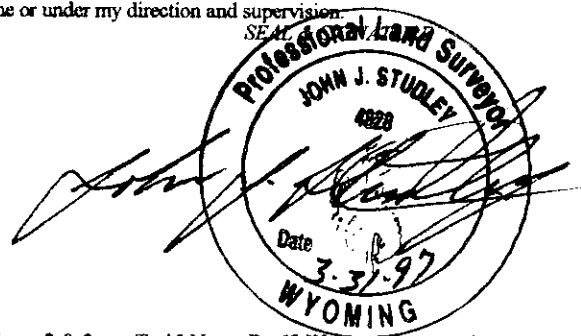
John J. Studley, Wyo. P.L.S. No. 4828

3509 Frontier Street

Cheyenne, Wyoming 82001

Telephone Number: (307) 634-3358

This corner record was prepared by me or under my direction and supervision.



Corner Name: CC Section: 2 & 3, T 12N, R 63W, 6th P.M.

Cross-Index No.: A:17
SBRPEPLS/PLSW: March 1994